

LITIO 2 and AutoCAD 2013:

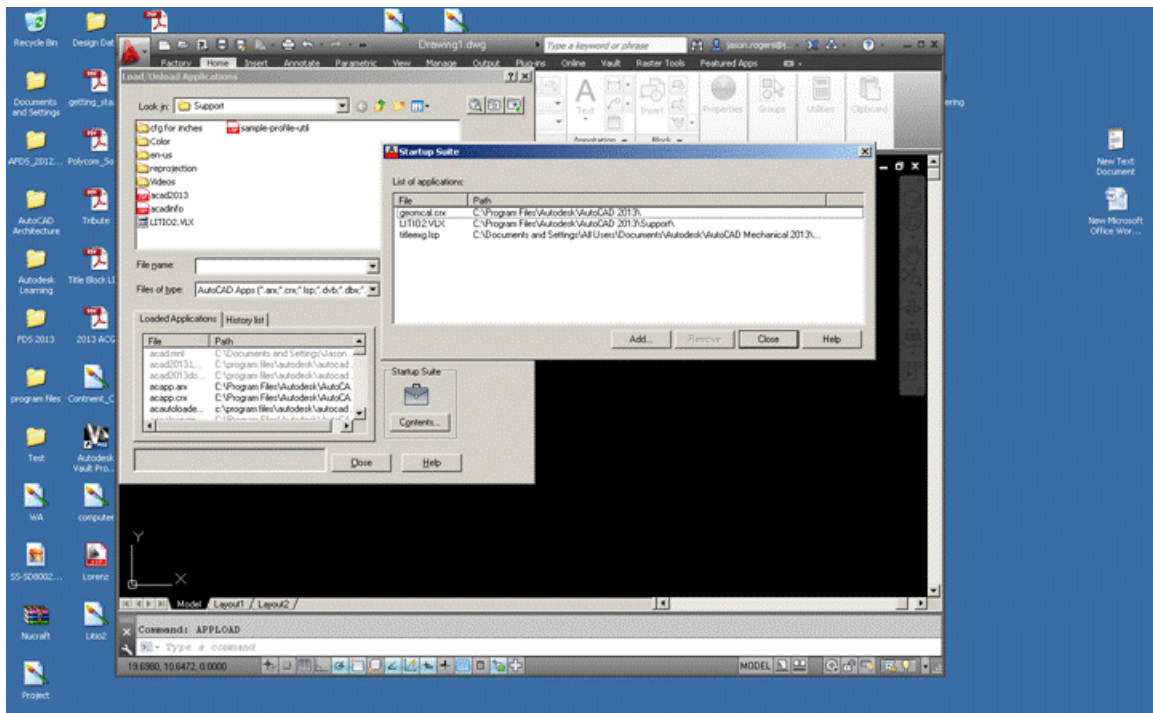
The following is the fix to run LITIO 2.0 within AutoCAD 2013.

To run LITIO2, install the program per the instructions.

If you receive this error:



... then you will have to load **GEOMCAL.crx**. This file is located in the installed directory of AutoCAD. To load this open AutoCAD; in the command line type "**appload**". From the **start up suite**, add **geomcal.crx** and **litio2.vlx** to this suite. [You do not need to load LITIO2.vlx with the appload command; but (from the APPLOAD command window) you need to add both geomcal.crx and litio2.vlx to the startup suite (right bottom of the LOAD APPLICATION window). A new window should open...]. See next figure:



Next exit AutoCAD and then restart AutoCAD, and the program will work properly.

Note: There is no need to load LITIO2 in the current session to run LITIO2. This method is an **autoload**. Just type **LITIO2** in the command line.